



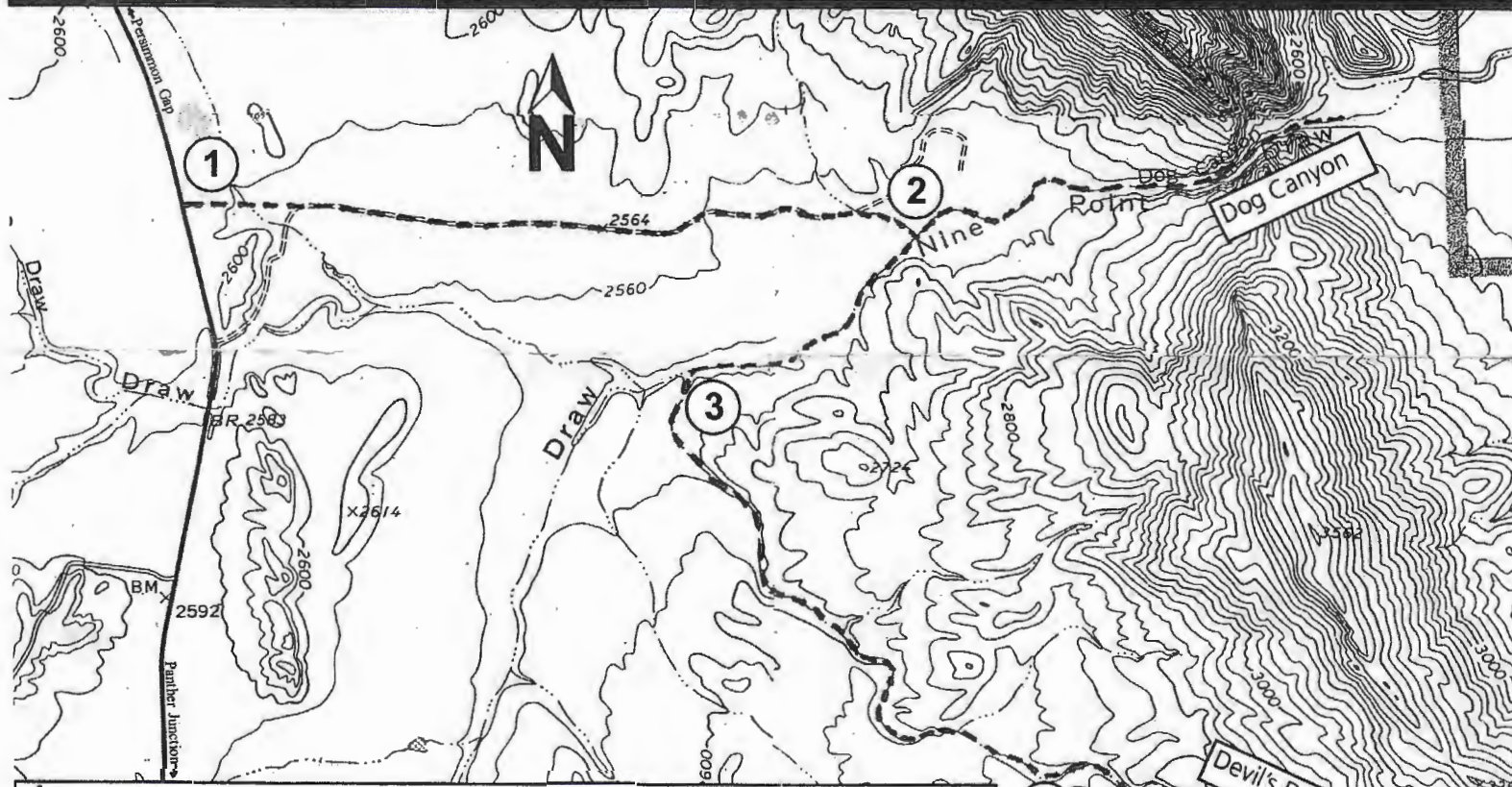
Dog Canyon - Devil's Den

BIG BEND NATIONAL PARK

Moderately difficult hikes to two backcountry canyons. Dog Canyon: 4 miles round trip. Devil's Den: 6 miles round trip. Carry Water!



View from Trailhead



- 1.** The hike begins at the roadside pullout with camel exhibit on the east side of the road 3.5 miles south of Persimmon Gap Visitor Center or 24 miles north of Panther Junction. Dog Canyon is clearly visible to the east. Devil's Den is seen as a narrow chasm cutting high across a hillside south of Dog Canyon.
- 2.** 1.5 miles from the trailhead, the trail enters a wash and the trail forks. A metal sign marks this spot. A left turn here follows the wash directly into Dog Canyon. Turn right to continue on the trail to Devil's Den.
- 3.** After 1/2 mile, another wash intersects from the south. Turn left (south) into this wash which is marked with a large rock cairn. The gravel cliffs will eventually turn to limestone layers and the walls will become steeper and narrower.
- 4.** Before the limestone walls become too steep, climb out of the wash on the south (right) bank and continue. It becomes increasingly difficult to travel through Devil's Den at this point due to large boulders and difficult climbs. You will soon find a primitive trail which parallels Devil's Den from above. It is marked by rock cairns. Return the way you came, or for true adventure, hike down into the upper mouth of the den and come back through it (please don't attempt this alone).



View from the top of Devil's Den